



CHARACTERIZATION OF THE CRYSTALLIZATION STEP IN THE API RECOVERY PROCESS



Marta González García (Novo Nordisk Supervisor)

Katrine Esmann Pedersen

Haiyan Qu (University Supervisor)

INTRODUCTION

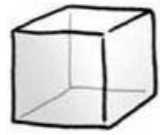
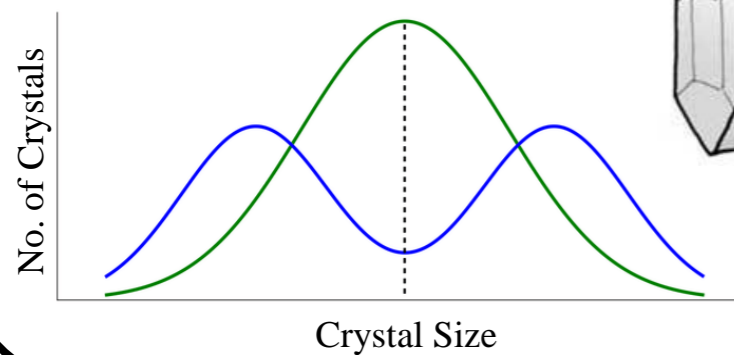
Crystallization determines:

- Crystal size distribution
- Crystal shape
- Product purity
- Polymorphism

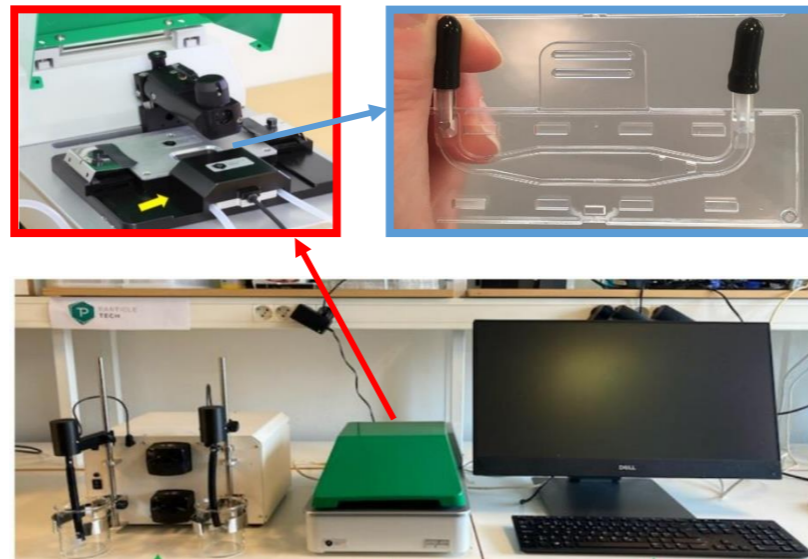
And yield

Which, in turn, affects:

- Downstream processing
- Bioavailability

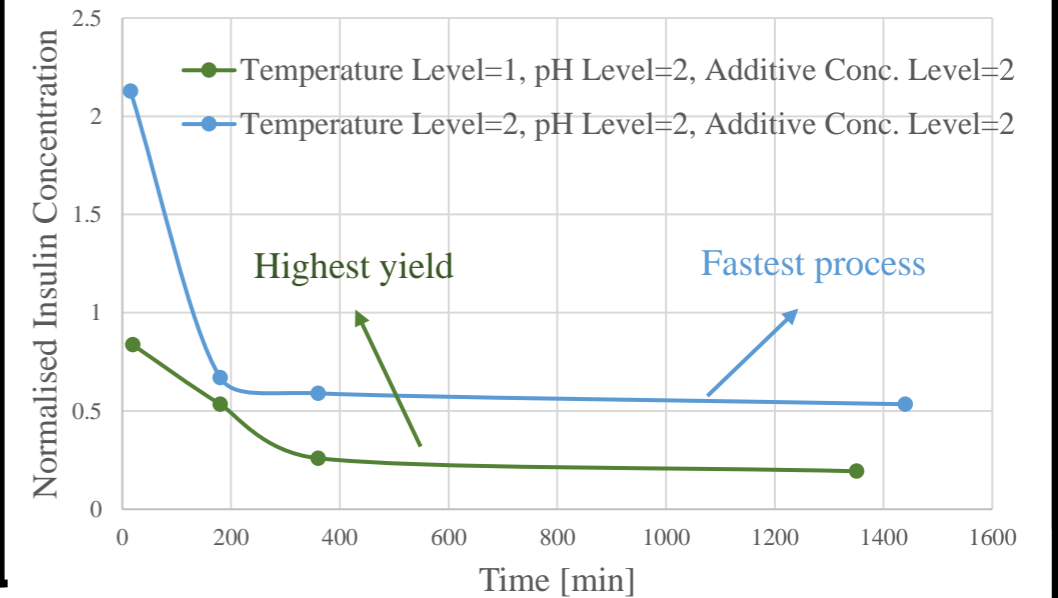


METHODS



OUTCOME

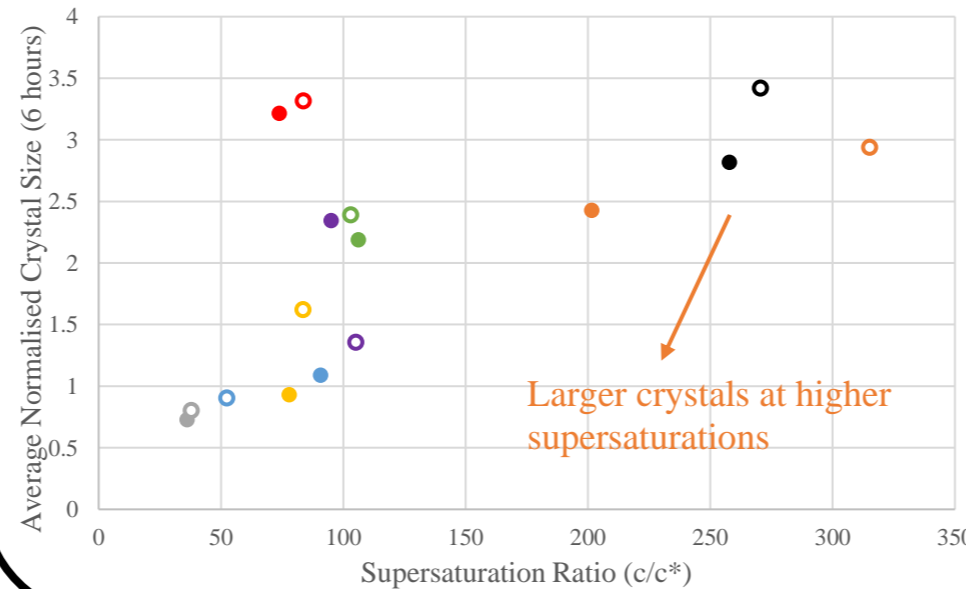
Rate of Supersaturation Consumption



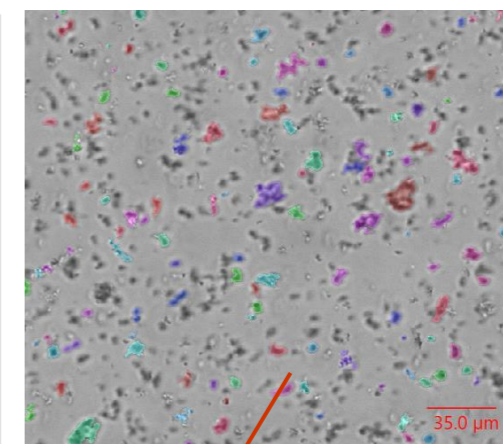
PERSPECTIVES

- Close collaboration with the industry
- Expectations to a newly educated Chemical Engineer
- My expectations to a workplace
- Real-life aspect to thesis work

Crystal Size vs. Supersaturation Ratio



Low pH



High pH

