

Introduction

Online process follow up is a must for Novozymes to continue optimizing recovery processes.

At-line measurements

Different enzymes

Different instruments



Enzyme balance

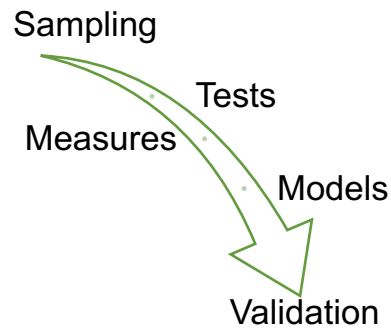


Accuracy on the measurements



Standardization of final product

Methods



PAT

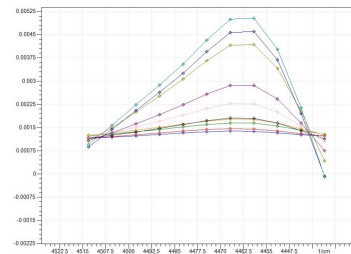
Models

MIR

NIR

PCA

PLS



Outcome



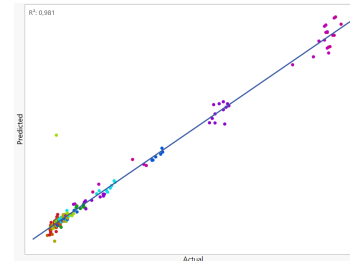
5 models show acceptable values of R^2 and SECV



It is possible to correlate spectral data with enzyme concentration and activity



Validation with an external dataset will be done



Perspectives

- Future implementation of PAT strategy
- Testing models on other products

Project



- Networking
- Getting to know the Danish industry
- Opportunities for a full-time job

Helix Fellow

